





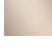



10 126 970



Passt zu: IMO, LULU, MADISON, MEM,  
TARA, CL.1, LISSÉ, VAIA, META, CYO

	Messing (23kt Gold)	10 126 970-09
	Chrom	10 126 970-00
	Platin gebürstet	10 126 970-06
	Platin	10 126 970-08
	Dark Chrome	10 126 970-19
	Light Gold	10 126 970-26
	Light Gold gebürstet	10 126 970-27
	Messing gebürstet (23kt Gold)	10 126 970-28
	Schwarz matt	10 126 970-33
	Bronze gebürstet	10 126 970-42
	Champagne gebürstet (22kt Gold)	10 126 970-46
	Champagne (22kt Gold)	10 126 970-47
	Chrom gebürstet	10 126 970-93
	Dark Platinum gebürstet	10 126 970-99



## Ablaufgarnitur ohne Druckverschluss 1 1/4" - Messing (23kt Gold)

---

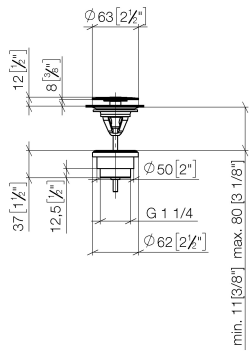
IMO

10 126 970

Nur für Becken ohne Überlauf geeignet.

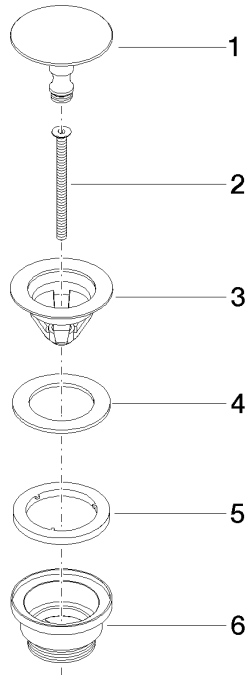
10 126 970

mm [inches]



10 126 970

Ersatzteile für die  
anderen  
Oberflächenvarianten  
finden Sie hier:  
Chrom



### Ersatzteilstückliste

Nr.	Artikelnummer	Benennung	Verbaumenge	Lieferzeit
1	09 31 20 097-09	Stopfen	1	40
2	09 30 30 179 90	Schraube	1	2
3	09 11 01 038-09	Kelch	1	40
4	09 14 05 061 90	Dichtung	1	2
5	09 14 03 153 90	Dichtung	1	2
6	09 11 10 156-09	Anschluss	1	60